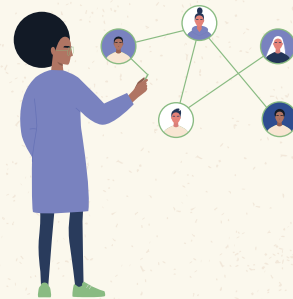
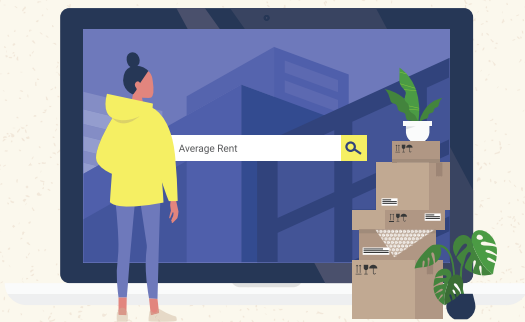


Nurse Job Relocation Checklist for Palm Springs, California



Start Networking Early

Post on LinkedIn and join local specialty nurse organizations as your primary networking source to find new job opportunities. You can also reach out to the state representative under the American Nurses Association who can provide an overview of suitable facilities based on your nursing specialty.



Explore the Local Area

Define your lifestyle and set a budget for expenses prior to relocating. Consider aspects like family size, commute time, rent, utility bills, and proximity to grocery stores before finalizing the location.



Acquire the Necessary Credentials

Upon relocation to a new department, certain positions require specific certifications in the field. You'll also need an active nursing license pertaining to the state of relocation, which can take upwards of 2 to 3 months to obtain.



View Our Available Positions at careers.eisenhowerhealth.org

#LiveWorkPlayProsper

Brought to you by



EISENHOWER HEALTH